

# IBM Environmental Intelligence Suite



## The challenges

Environmental decline and severe weather events from climate change are impacting our daily lives and the ways we do business, forcing industry leaders to fundamentally change the way they operate.

Worldwide, companies are facing climate-related damage to their assets, disruptions to supply chains and operations, as well as increasing expectations from consumers and investors to perform as an environmental leader. Extreme weather, climate action failure and human-led environmental damage were cited as the top three most likely risks for businesses over the next ten years in the World Economic Forum's "Global Risks Report 2021." Businesses need actionable environmental insights to address these challenges, but current methods are often cumbersome and complex – requiring intensive manual labor, climate and data science skills, and computing power.

Minimizing disruption to your business requires more than just accessing climate and weather data – you must employ advanced analytics and intelligent workflows to reimagine processes and better predict how your assets, employees and customers could be impacted. As sustainability becomes an increasingly important business imperative, the

IBM Environmental Intelligence Suite is helping businesses plan for and respond to disruptive events to better ensure business continuity and resiliency across supply chains worldwide.

## Plan for and respond to critical weather events with advanced analytics to ensure business continuity

IBM Environmental Intelligence Suite combines AI with weather, climate, and operational data into a single solution. This suite of applications combines the tools you need to not only predict disruptions to your business, but rapidly respond to them – or avoid them altogether.

- Prepare for the unexpected with business intelligence that brings together proprietary and third-party geospatial, weather, and IoT data to predict and plan for weather events
- Prevent disruption to critical assets, infrastructure, and operations by using geospatial data and analytics to assess the climate risk
- Determine security and prepare contingency plans across supply networks

# Clients use the Environmental Intelligence Suite to drive...

- Weather Intelligence
- Carbon Accounting
- Vegetation Management
- Outage Prediction
- Regenerative Agriculture
- Renewables Forecasting



- Empower strategic decision making with enterprise-wide visibility to KPIs across your business operations
- Ensure business continuity with insights developed from advanced analytics on your assets, workforce, and customers
- Deliver comprehensive climate risk and carbon performance reporting with confidence



**Gain insights** into potential operational disruptions and prioritize mitigation and response efforts



**Measure and report** on environmental initiatives, while reducing the burden of this reporting on procurement and operations teams

## The Environmental Intelligence Suite is a SaaS solution designed to help organizations:



**Monitor** for disruptive environmental conditions such as severe weather, wildfires, flooding, air quality, and carbon emissions and send alerts when detected.



**Predict** potential impacts of climate change and weather across the business using climate risk analytics

The suite delivers environmental insights via APIs, dashboards, maps and alerts that can help companies address both immediate operational challenges as well as longer term planning and strategies. For instance, the suite could be used to help retailers prepare for severe weather-related shipping and inventory disruptions, or factor environmental risks into future warehouse locations; utility companies to determine where to trim vegetation around power lines; energy companies to balance supply and demand for renewable energy or determine which of their critical assets may soon be at greater risk from wildfires due to climate change. Or, the suite could be used to help supermarkets get a clearer picture of how refrigeration systems are contributing to their overall greenhouse gas emissions, and prioritize locations for improvement.

## What's included in IBM Environmental Intelligence Suite?

- Weather API services provide access to a variety of weather data such as high-accuracy, hyper-local forecast, historical data and industry-specific data packages (i.e. agriculture, aviation and renewable energy).
- Geospatial analytics engine brings six petabytes of geospatial-temporal datasets to equip the businesses with a unique set of knowledge, imperative to maintaining the leadership in the era of machine learning and AI.
- Operations dashboard connects the data insights to visual representations that anyone in the company can understand and configure, no matter what background and technical skills they have.
- Scalable alerts console pushes out action items to the thousands of personnel, at the right time and right place so that the weather insights for your business can be taken to actions instantly.

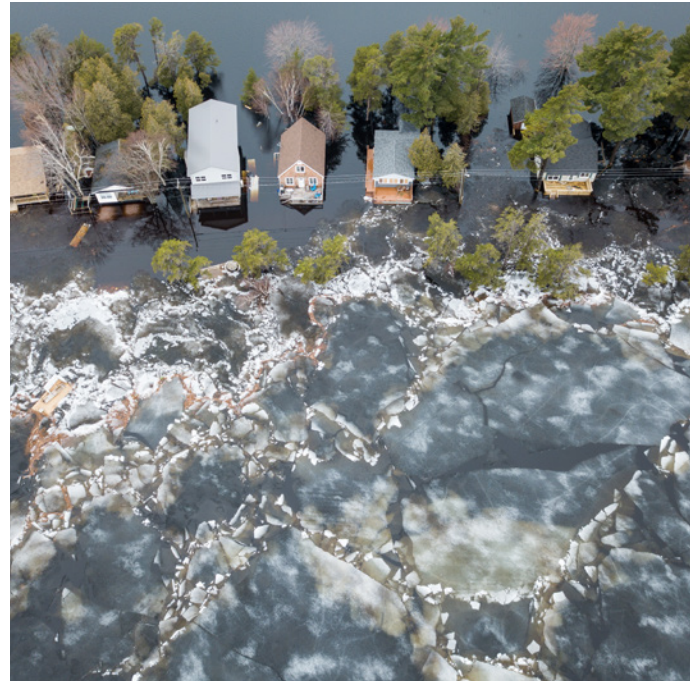
The stakes are high, and the mandates are real. Is your business prepared to comply, measure and report on environmental emissions data?

## To learn more, contact your IBM Business Partner:

Insight

+46 (0)8 522 100 10 | [marco.dho@insight.com](mailto:marco.dho@insight.com)

[https://se.insight.com/sv\\_SE/home.html](https://se.insight.com/sv_SE/home.html)



© Copyright IBM Corporation 2021

IBM Corporation  
Route 100  
Somers, NY 10589

Produced in the United States of America  
October 2021

IBM, the IBM logo, ibm.com, The Weather Company and The Weather Company logo are trademarks of International Business Machines Corp., registered in many jurisdictions worldwide. Other product and service names might be trademarks of IBM or other companies. A current list of IBM trademarks is available on the Web at "Copyright and trademark information" at <http://www.ibm.com/legal/us/en/copytrade.shtml>

This document is current as of the initial date of publication and may be changed by IBM at any time. Not all offerings are available in every country in which IBM operates.

The information in this document is provided "as is" without any warranty, express or implied, including without any warranties of merchantability, fitness for a particular purpose and any warranty or condition of non-infringement.

IBM products are warranted according to the terms and conditions of the agreements under which they are provided.